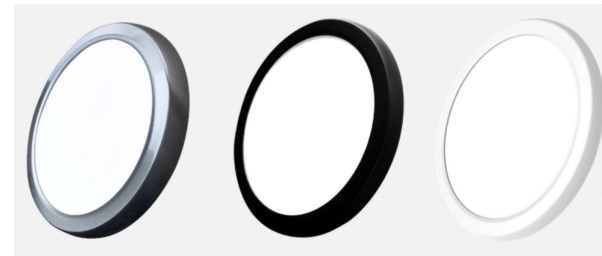


# Safety and Installation Instructions LED Flush mount light



Thank you for purchasing our product. This fixture has been manufactured from components with advanced optoelectronics to ensure high reliability and long life. Before assembling please read this Operation Manual carefully and save in a safe place for future reference. Please note that all electrical connections must be in accordance with local and National Electrical Code standards as well as local building codes. In case you are not familiar with proper wiring connections and building codes, consult a qualified electrician.

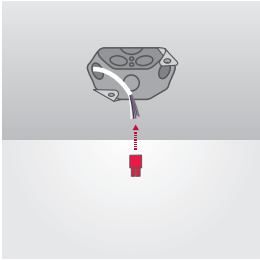


## Safety recommendations

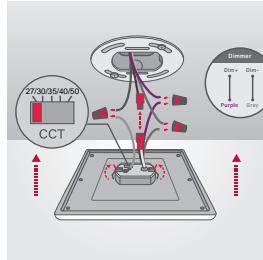
1. RISK OF ELECTRIC SHOCK – THIS PRODUCT MUST BE INSTALLED IN ACCORDANCE WITH APPLICABLE INSTALLATION CODES BY A PERSON FAMILIAR WITH MENTIONED ABOVE CODES AND HAZARDS INVOLVED. DISCONNECT POWER AT CIRCUIT BREAKER OR FUSE BEFORE INSTALLING OR SERVICING.
2. Before use of the product carefully read the whole Operation Manual.
3. THE PRODUCT IS PURPOSED FOR INTERIOR USE ONLY, SUITABLE FOR WET LOCATIONS.
4. Protect the product against direct contact with water.
5. Assemble the product only with the use of parts provided and the housing; improper assembly may result in device failing which could damage the product, personal property or cause injury.
6. Assembly shall follow with accessories delivered with the set only.
7. The device is not a toy, KEEP OUT OF REACH OF CHILDREN.

## FLAT SQUARE

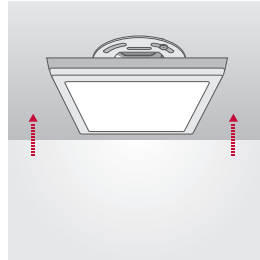
A. Installation to 2.75", 3" and 4" j-box



**Step 1**  
Turn-off / disconnect power at circuit breaker. Attach connector (provided) to AC cable from junction box: L side to Black side wire. N side to White AC wire.

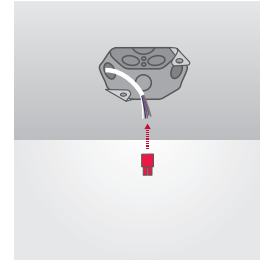


**Step 2**  
Attache the adapter to junction box using 2 screws(provided). Pull the cable with connector through the bracket center hole.Make ground and dimming connection using wire nuts (provided). Next simply 'click' the two sides of orange connector together.

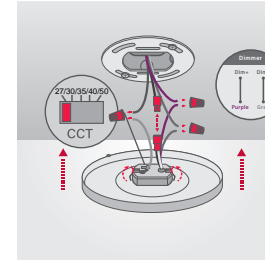


**Step 3**  
Push and feed all wires up into junction box as you raise the fixture into place. Push to lock the fixture in place.

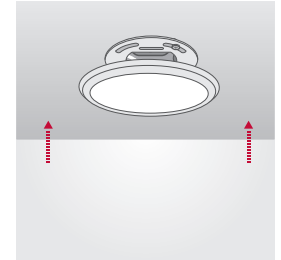
## FLAT ROUND



**Step 1**  
Turn-off / disconnect power at circuit breaker. Attach connector (provided) to AC cable from junction box: L side to Black side wire. N side to White AC wire.

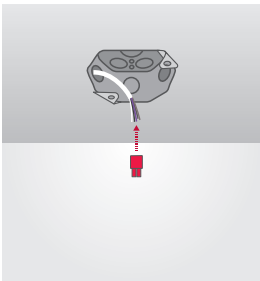


**Step 2**  
Attache the adapter to junction box using 2 screws(provided). Pull the cable with connector through the bracket center hole.Make ground and dimming connection using wire nuts (provided). Next simply 'click' the two sides of orange connector together.

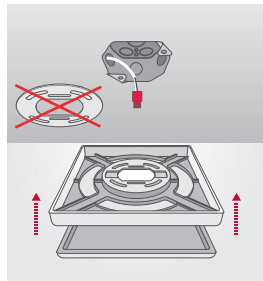


**Step 3**  
Push and feed all wires up into junction box as you raise the fixture into place. Push to lock the fixture in place.

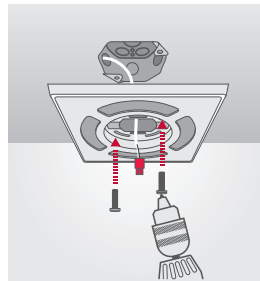
B. Installation to shallow box



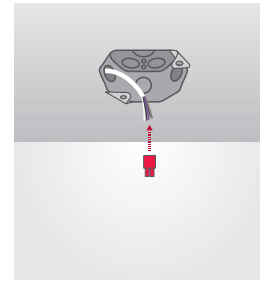
**Step 1**  
Turn-off / disconnect power at circuit breaker. Attach connector (provided) to AC cable from junction box: L side to Black side wire. N side to White AC wire.



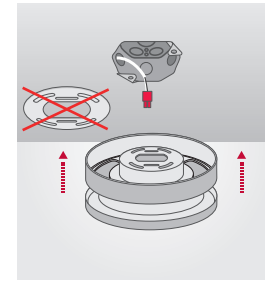
**Step 2**  
Raise the adapter in to the junction box. remove the bracket then throw it away(no need)



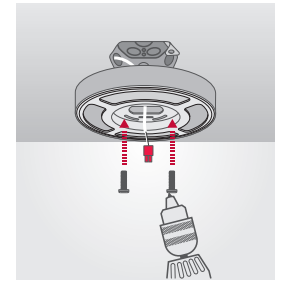
**Step 3**  
Attache the adapter to junction box using 2 screws (provided). Pull the cable with connector through the bracket center hole.



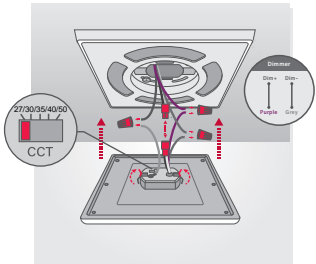
**Step 1**  
Turn-off / disconnect power at circuit breaker. Attach connector (provided) to AC cable from junction box: L side to Black side wire. N side to White AC wire.



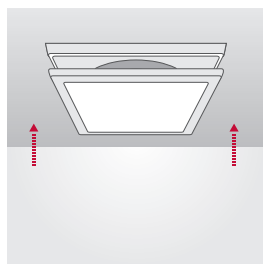
**Step 2**  
Raise the adapter in to the junction box. remove the bracket then throw it away(no need)



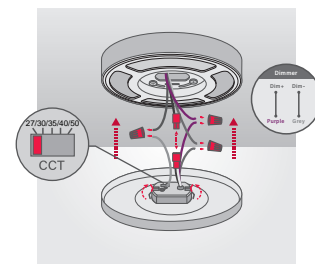
**Step 3**  
Attache the adapter to junction box using 2 screws (provided). Pull the cable with connector through the bracket center hole.



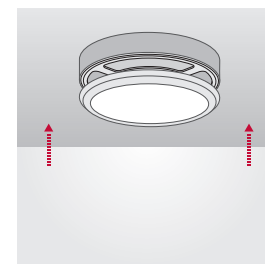
**Step 4**  
Make ground and dimming connection using wire nuts (provided). Next simply 'click' the two sides of orange connector together.



**Step 5**  
Push and feed all wires up into junction box as you raise the fixture into place. Push to lock the fixture in place.



**Step 4**  
Make ground and dimming connection using wire nuts (provided). Next simply 'click' the two sides of orange connector together.



**Step 5**  
Push and feed all wires up into junction box as you raise the fixture into place. Push to lock the fixture in place.