

Slim LED Panel Light



RISK OF ELECTRIC SHOCK

- All electrical connections must be in accordance with local and National Electric code (N.E.C.) standards.
- If you are unfamiliar with proper electrical wiring connections, obtains the service of a qualified electricians..

RISK OF FIRE

- Keep combustibles and other materials that may burn away from lights.
- The maximum-ambient-temperature is-104° F. Do not operate fixture at temperature higher than it.

CAUTION: Turn off the main power at the circuit breaker before installing the fixture in order to prevent possible shock.



PACKAGE CONTENTS



LED slim panel light



Junction Box



Wire Connectors



User Manual

PRE-INSTALLATION

TOOLS REQUIRED



Power drill with a hole saw



Ladder



Safety Goggles



Gloves



Wire Cutter and Stripper



Dimmer from the compatible list (if needed)

PLANNING THE INSTALLATION

- Locate the suitable location for the fixture, and cut the correctly sized hole in the drywall or ceiling tile (for a suspended T-bar ceiling) — Refer to the Cutout Template provided for appropriate size.
- Run electrical wire from the switch (power supply) through the mounting hole; use NM cable or Flexible Metal Conduit Cable.

ADJUSTING THE LIGHT COLOR TEMPERATURE

For 5CCT models only:

This LED fixture provides full brightness with a selection of five color temperatures (CCT): 2700K warm white, 3000K soft white, 3500K neutral white, 4000K bright white, or 5000K daylight.

2700K 3000K 3500K 4000K 5000K



NOTICE: Move the DIP switch on the side of the junction box to make your selection BEFORE inserting the junction box into the ceiling.

INSTALLATION INSTRUCTIONS

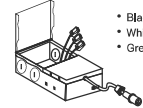
1

Turn off the power before installation. Open a hole on the ceiling according to the size of fixture.



2

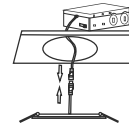
Open the junction box, connect with power cable 110V.



- Black wire - L (Line)
- White wire - N (Neutral)
- Green wire - G (Ground)

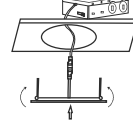
3

Connect the fixture with power cable and the junction box.



4

Install the fixture to ceiling surface.



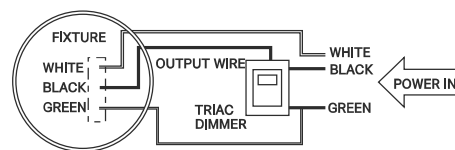
5

Turn on the power after installation, check the light and make sure work.



TRIAC DIMMERS AND CONNECTIONS

NOTICE: Dimming performance depends on dimmer, dimmer settings (for dimmers with brightness range adjustments), wiring methods, and the number of led fixtures (Total Power of Lights <80% of the Rated Power of the Dimmer).



WARRANTY

We appreciate the trust and confidence you have placed through the purchase of this LED light. We strive to continually create quality products designed to enhance your home.

This product is warranted to be free from defects in workmanship and materials for up to Five years from the date of purchase.