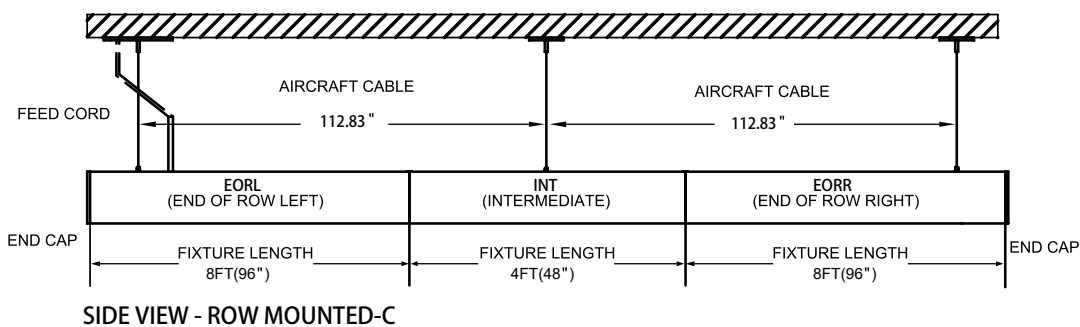
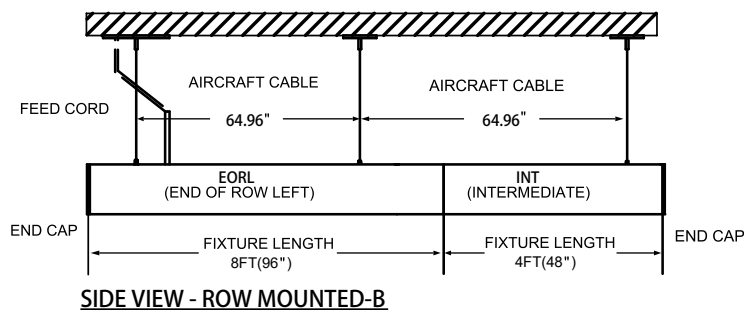
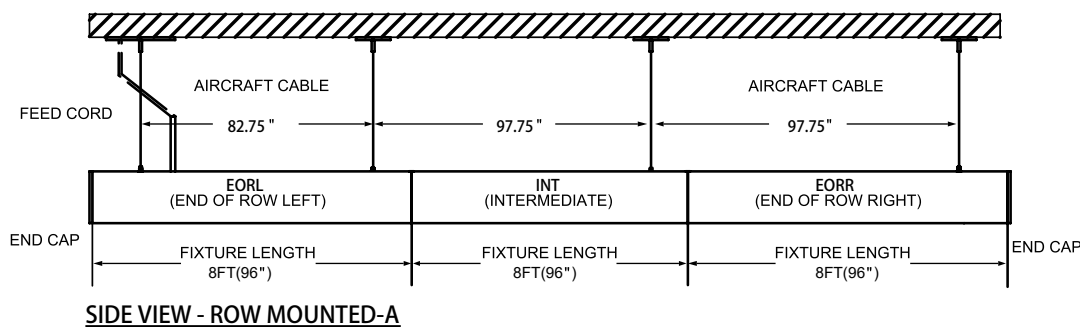
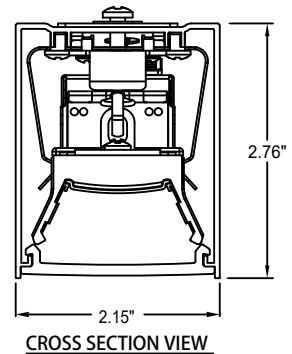
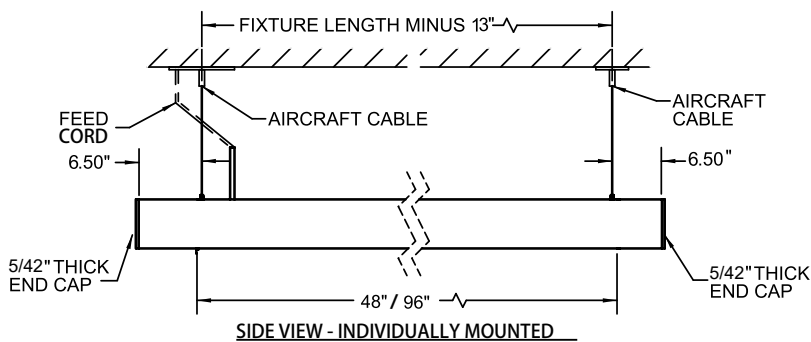


LINEAR LIGHT

PENDANT INSTALLATION INSTRUCTIONS

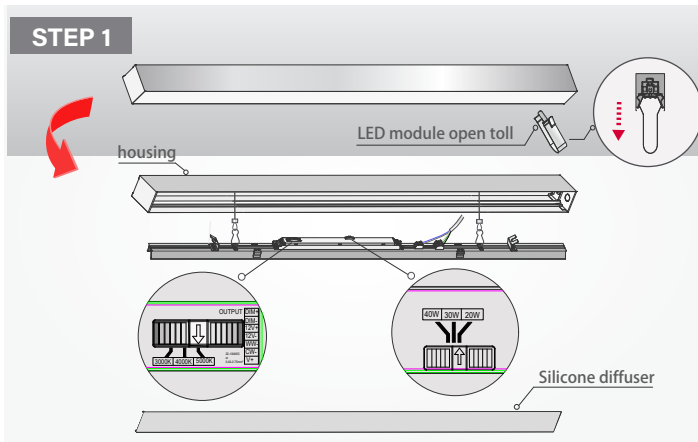


GENERAL NOTES: (READ SHEETS COMPLETELY BEFORE STARTING)

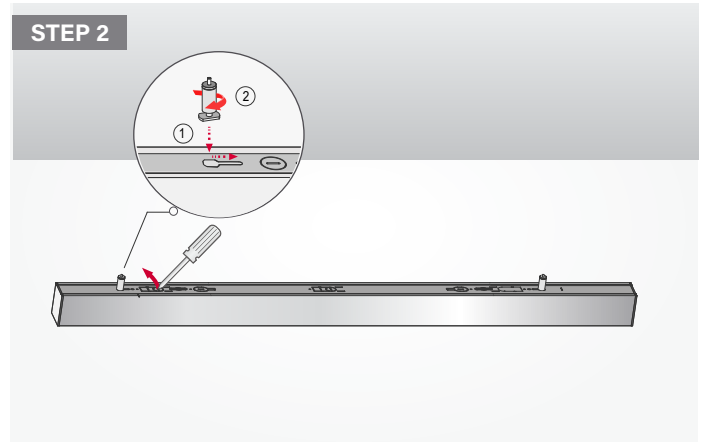
1. LEAVE PROTECTIVE WRAPPING MATERIAL ON FIXTURE(S) UNTIL START OF INSTALLATION TO PROTECT FINISH FROM DAMAGE.
2. APPROXIMATE WEIGHT OF FIXTURE IS 1.50 LBS PER FOOT OF LENGTH.
3. FEED CORDS ARE FACTORY INSTALLED ON INDIVIDUAL FIXTURES. FOR ROW MOUNTED FIXTURES, FEED CORD IS FACTORY INSTALLED AT END OF ROW LEFT (EORL) FIXTURE ONLY. IF ADDITIONAL FEED CORDS ARE REQUIRED FOR THE ROW, THEY WILL BE SUPPLIED BY LITECONTROL BUT FIELD INSTALLED BY CONTRACTOR.

LINEAR LIGHT

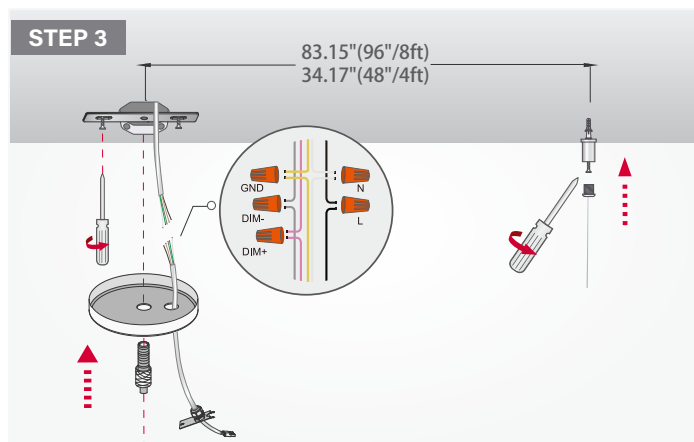
Pendant single unit mounting



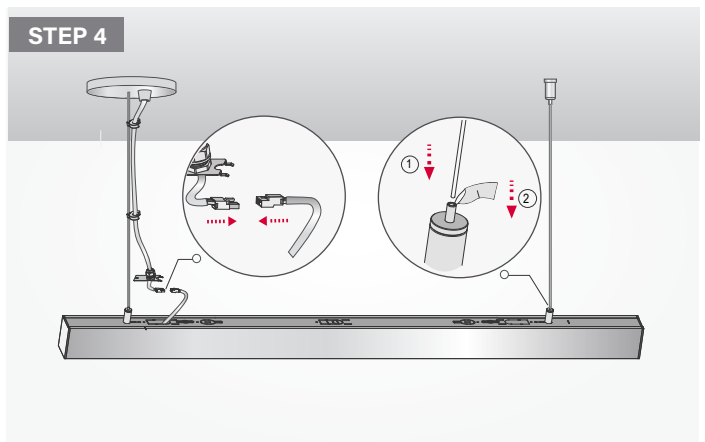
STEP 1: Remove the lens by hand, then remove the LED module by inserting and lifting up the two U-shaped clips (provided); follow the label indications to select desired color and power by sliding the two switches, then assemble the LED module and diffuser;



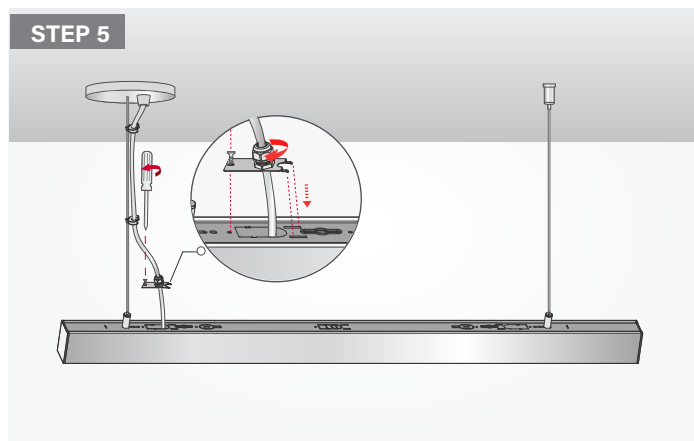
STEP 2: Put the hanging wire holder hook thru the knock out hole of the fixture, then use screw driver open the knockout hole for cable connection;



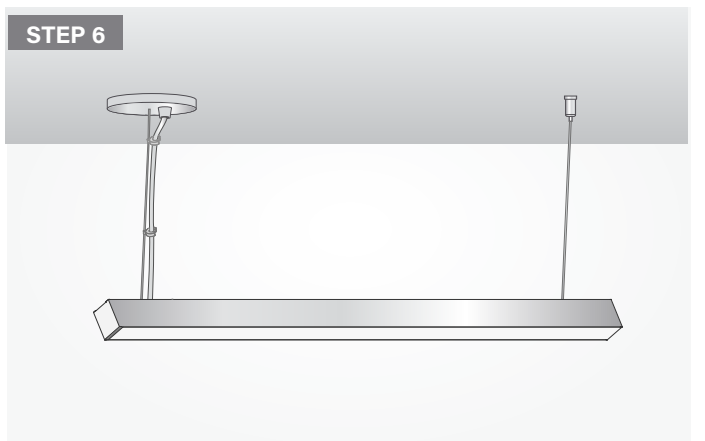
STEP 3: Install the bracket on the Jbox in the ceiling, then pull the cable thru the canopy; tighten the cable holder, make wire connections as diagram indicates. then use the screw pipe install to hold the canopy in place, mount the aircraft wire holder on the ceiling then following the instruction distance;



STEP 4: Put the two aircraft wires thru the wire holder of the ceiling box and ceiling until it's locked, then holdup the fixture hanging on the ceiling by inserting aircraft wire thru the wire holder on the back of fixture, pull out the connector from the big knockout hole on the back of the fixture, connect the cable from ceiling box to the fixture by plugging quick connectors ;



STEP 5: Put the cable cover back then assemble the screw, adjust the hanging height of fixture by pulling the aircraft wire to lift the fixture up, or push the wire holder top to release aircraft to let fixture slide down to desired height, then use the cable and aircraft holder lock together of the cable and wire;

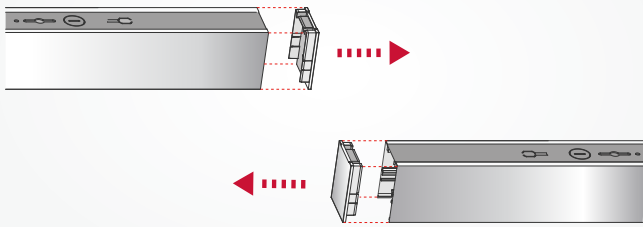


STEP 6: Enjoy your light.

LINEAR LIGHT

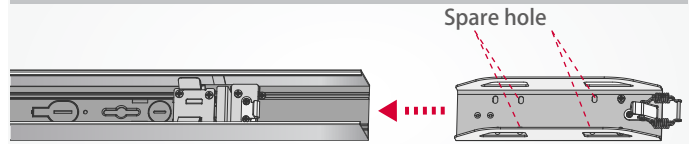
Pendant linkable mounting

STEP 1



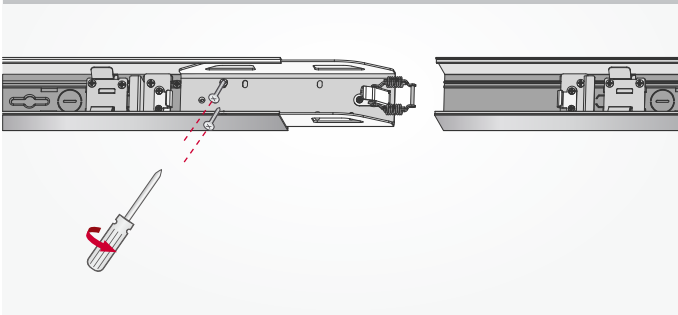
STEP 1: Follow the single mounting step1 to remove the lens and LED module, then follow the label indication to set up the CCT and power by adjusting the two switches , remove all the end caps of the fixture;

STEP 2



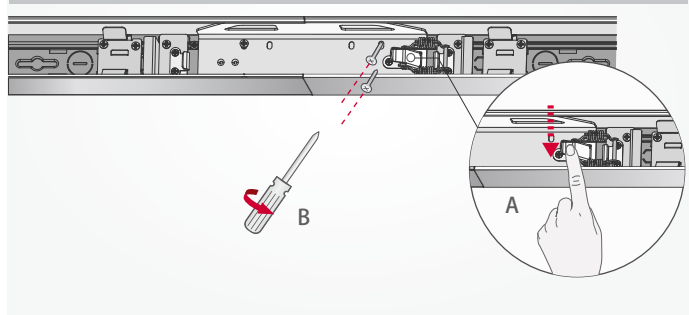
STEP 2: Plug in the insert bracket into the fixture casing end, install two screws to lock the insert;

STEP 3



STEP 3: Plug into another fixture end after alignment, then lift the spring hook on the fixture;

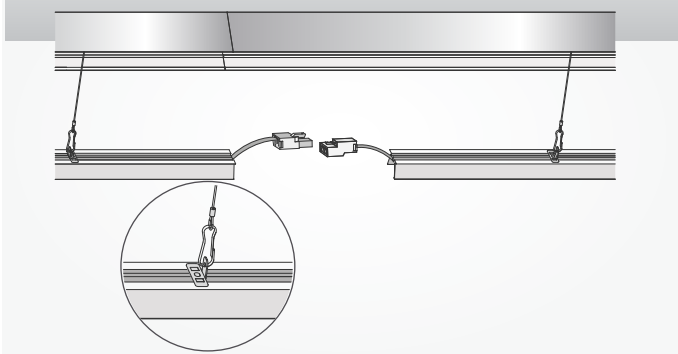
STEP 4



STEP 4A: Push down the spring handle until it' s locked tightly;

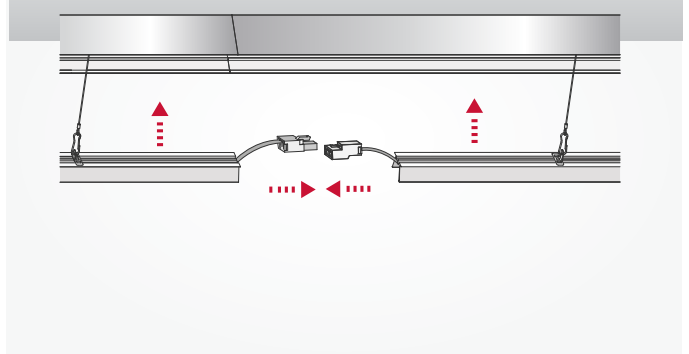
STEP 4B: Install another two screw to tighten the other side on the fixture;

STEP 5



STEP 5: Hook the safety wire of the casing with the LED module

STEP 6

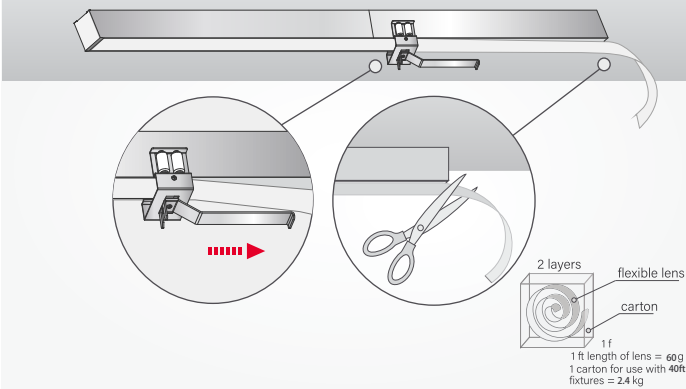


STEP 6: The assemble back the LED module and connect the cable between fixture with connector on the LED module one by one into the casing;

LINEAR LIGHT

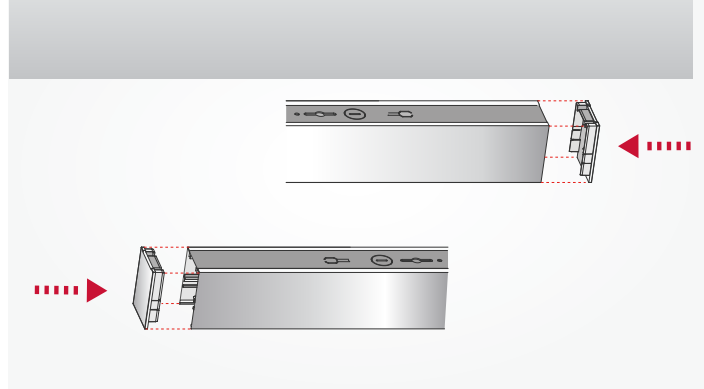
Pendant linkable mounting

STEP 7



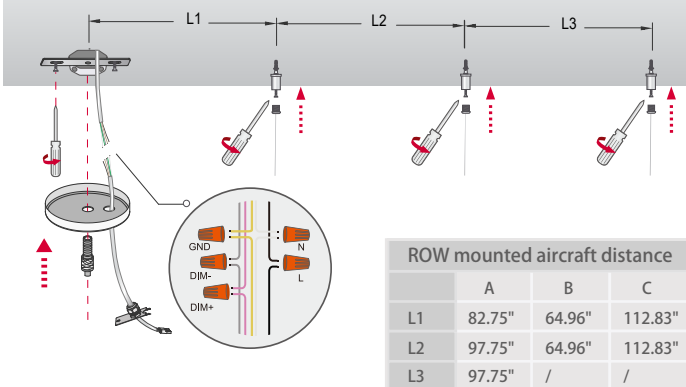
STEP 7: Assemble the lens from one end to another, then cut off the lens evenly;

STEP 8



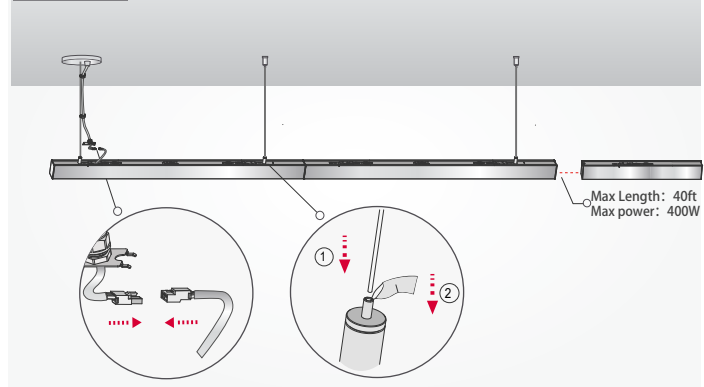
STEP 8: Assemble the end caps back on the left and right side;

STEP 9



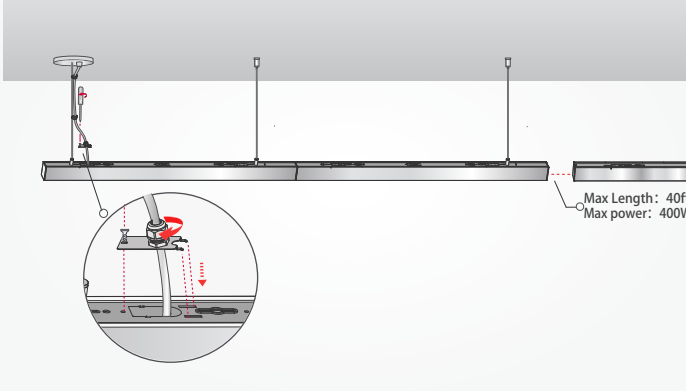
STEP 9: follow the single mounting instructions step2 to put the hanging wire holder hook into the back hole ('hammer' hole) of the fixture, then use screw driver to open the knock hole for cable connection(the hole near the power supplier cable), install the bracket on the JBOX for ceiling box, then pull the cable in to the small cable cover,tighten the cable holder, then make cable connection as diagram indicates, then use the screw pipe install to hold the ceiling box, then follow the instruction distance mounting the aircraft wire holder on the ceiling one by one;

STEP 10



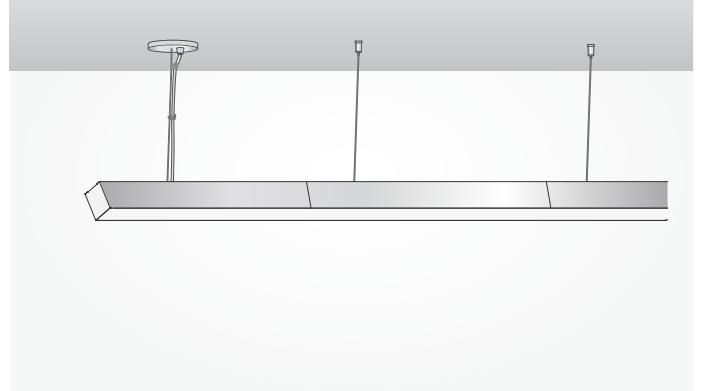
STEP 10: Put the two aircraft wires into the wire holder of the ceiling box and ceiling until it's locked, then hold all the fixture together hanging on the ceiling by using aircraft wire through into the wire holder on the fixture back one by one (remember each fixture should have one people to hold to avoid breaking the insert),pull out the connector from the big knock hole on the fixture back, connect the cable from ceiling box to the fixture by connectors(for every one power supplier, max connect units should be 10pcs of 4ft or 5pcs of 8ft, max power should be less than 400W);

STEP 11



STEP 11: Put the cable cover back then assemble the screw, adjust the hanging height of fixture by pulling the aircraft wire to lift the fixture up, or push the wire holder top heard to release aircraft let fixture down, then use the cable and aircraft holder lock together of the cable and wire.

STEP 12



STEP 12: Enjoy your light.